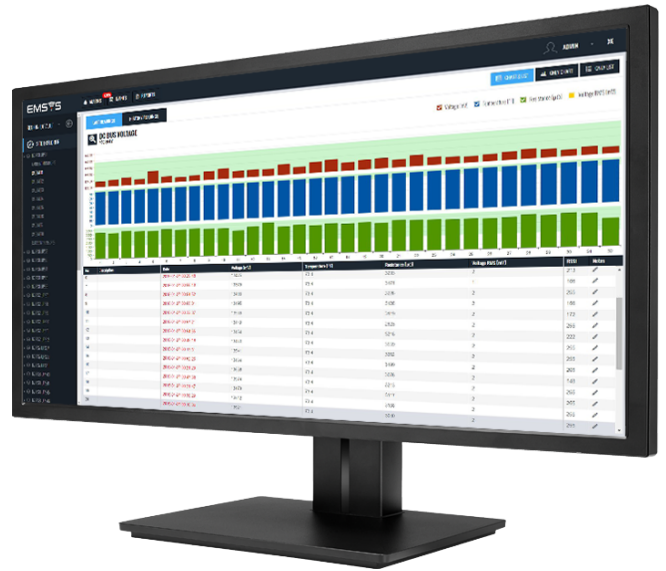


CELLSPY APPLICATION

Data Sheet

The CellSPY Application is the viewing window into the data that has been aggregated by the EMSYS Gateway from different types of EMSYS monitors. The monitoring application is an easy to use intuitive graphical user interface that is available from any web browser. Trending of the readings collected by the EMSYS Sensors are done using the latest web technologies with an amazing speed known only to desktop applications in the past.



THE DATA CAN BE LOOKED AT IN MANY DIFFERENT WAYS. TO NAME A FEW:

Battery Explorer presents the latest readings on all batteries in a string/bank.

In the historical readings view a candle model shows the high and low measurements of monitors so variances are easily seen.

Historical Line Graph presents a detailed view of the measurements from a particular monitor during a specified period.

Geographical map allows the user to select and view site data by its location on the map.

Alarm and event engine provides a practical way to monitor current alarm states and observe past events if needed.

Every click, move or login attempt is saved as an event.

Load Bank Testing is fully supported by the CellSPY Web Application. PDF and CSV reports are only a click away.

No need for late night maintenance tasks. Perform "Periodic Maintenance Test" from the comfort of your office. PDF or CSV files will be generated within a minute after a test is issued.